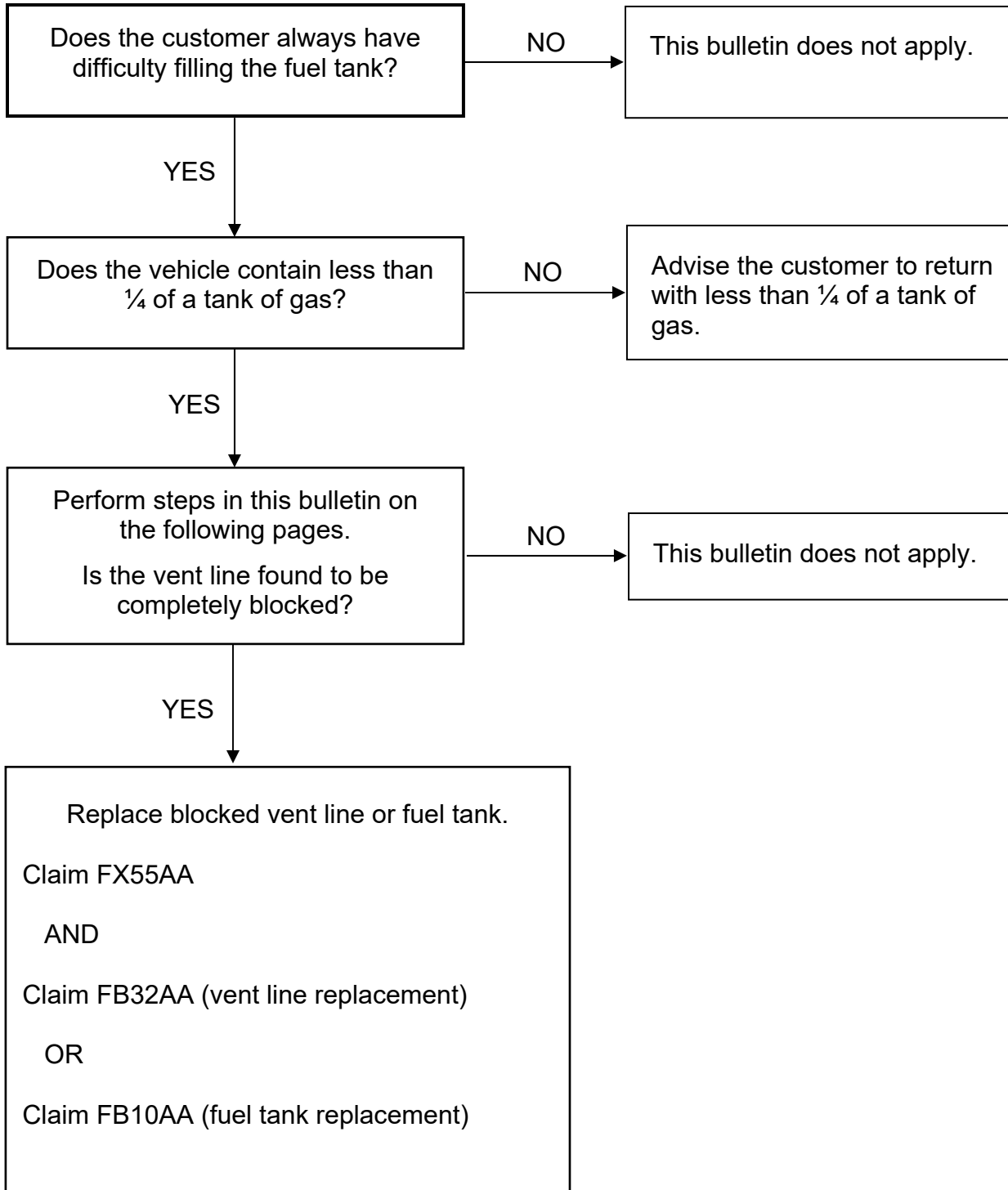


REPAIR OVERVIEW



Essential Tools

- Tech-Mate Dual Purpose Diagnostic Leak Detector (part number 697-95-0130-NIS)



Figure A

Additional Essential Tools are available from Tech•Mate online: www.nissantechmate.com, or by phone: 1-800-662-2001.

INSPECTION PROCEDURE

IMPORTANT: Follow all cautions, warnings, and notes in the Electronic Service Manual (ESM) when working on or near the vehicle fuel system.

1. If the vehicle fuel tank is above $\frac{1}{4}$ of a tank, this investigation process **CANNOT** be performed. Request customer to return with $\frac{1}{4}$ of a tank or less.
2. Connect the Tech-Mate Dual Purpose Diagnostic Leak Detector (part number 697-95-0130-NIS) to the EVAP service port.
 - Follow the instructions included with the Leak Detector to introduce “smoke” into the EVAP system.
3. Connect the CONSULT-III plus (C-III plus) VI to the vehicle and open C-III plus on the CONSULT PC.
4. Select **Diagnosis (One System)** and **ENGINE**, and then **Active Test**.
5. In Active Test, select **VENT CONTROL/V** and close the EVAP Canister Vent Control Valve by selecting **ON**.
6. Remove the fuel cap.

- Does any smoke come out of the filler tube?
- Does the flow meter show any flow?

- **If YES to either of the above:**
This bulletin does not apply.

NOTE: Further diagnostic may be required and is not covered under this bulletin. Refer to the ESM for further information.

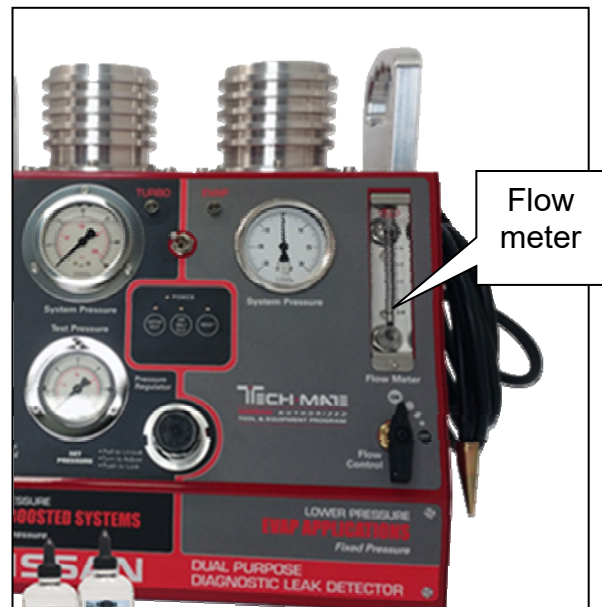


Figure 1

- **If NO to both of the above:** Go to step 7.

7. Is the vent line part of the tank assembly? See Figure 2 for reference.

- Refer to the electronic parts catalog (FAST or equivalent) to confirm if the vent line is part of the fuel tank assembly.

➤ **YES:** Replace the fuel tank.

- Refer to the ESM, section, **FL – Fuel System** to replace the fuel tank.

➤ **NO:** Replace ONLY the section of the vent line that contains the blockage.

NOTE: The vent line between the tank and canister may be made up of multiple parts.

- Refer to the ESM, section, **FL – Fuel System** to replace the vent line assembly.

Figure 2 below illustrates a basic evaporative emissions system and is for reference only.

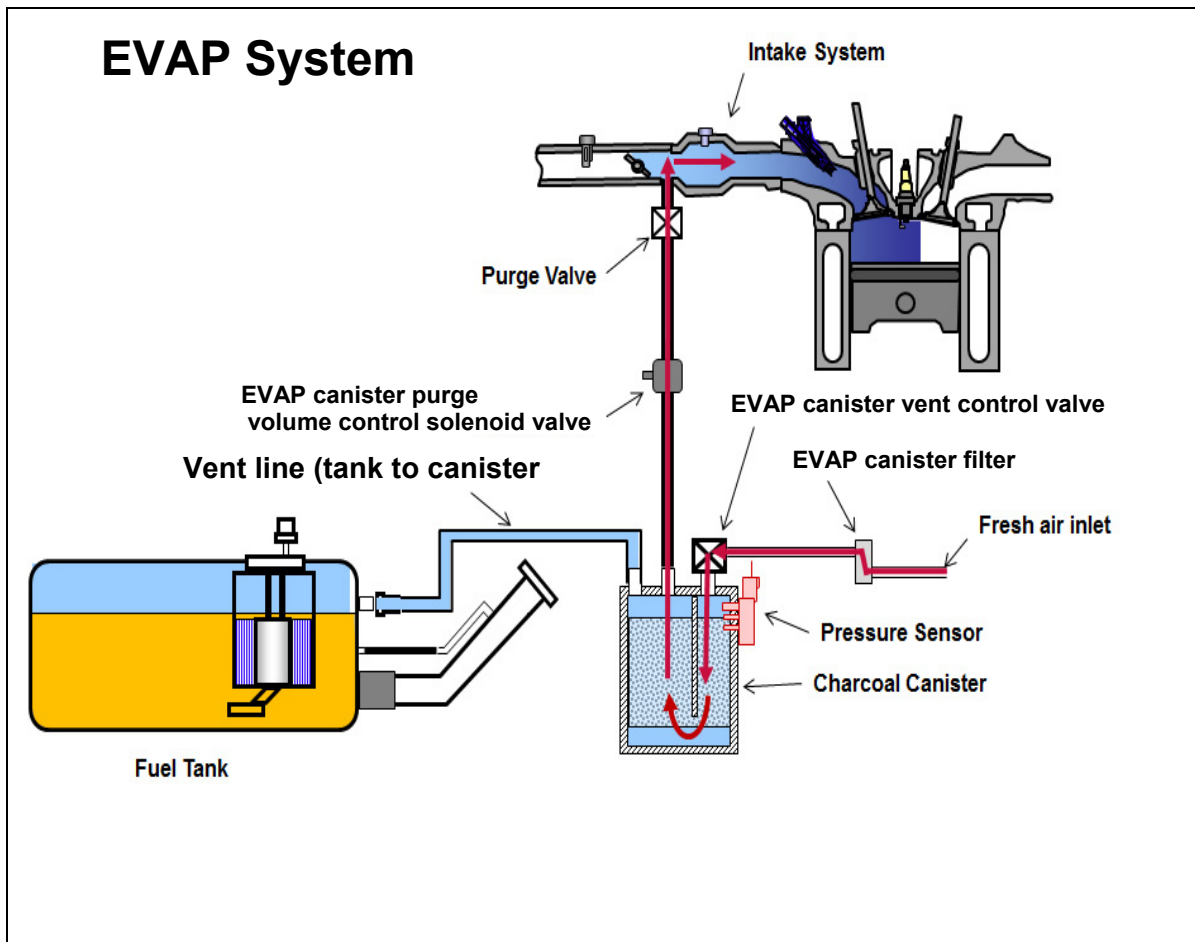


Figure 2

COVERED PARTS

(Parts Covered by this Emission Warranty Coverage Enhancement)

NOTE:

- This parts table is a list of parts that are covered by this emission warranty coverage enhancement. It may list more than one part number for a given Model/Model Year. For this reason it is required that the electronic parts catalog (FAST or equivalent) be used to obtain the specific part number for a given vehicle.
- The parts listed on the following page(s) include a wide range of evaporative emissions vent lines and fuel tanks for a large number of vehicles. The usage rate for these parts is expected to be very small. Nissan recommends that dealers do not stock these parts and order only as necessary to ensure parts are available when needed, especially for older models.

MODEL	DESCRIPTION	PART NUMBER	QUANTITY
2004 -2008 Maxima (A34)	TANK ASSY-FUEL	17202-7Y000	1
	TANK ASSY - FUEL	17202-ZD80A	
2009 -2015 Maxima (A35)	TANK ASSY - FUEL	17202-ZX21C	1
2016 -2017 Maxima (A36)	TANK ASSY - FUEL	17202-3TA0C	1
2004 - 2015 Armada (TA60)	TUBE VENTILATION	17226-ZH000	1
2004 - 2015 Titan (A60)	TUBE VENTILATION	17226-ZH000	1
	HOSE-VENTILATION	17226-ZR00A	1
2016 - 2017 Titan XD/Titan (A61) Gas engine	HOSE-EMISSION CONTROL	17226-EZ30A	1
2004 - 2012 Sentra (B15/16)	TUBE FUEL	17501-ET000	1
2013 - 2016 Sentra (B17)	TUBE-VENTILATION	17321-3SG0A	1
	HOSE-BREATHER	17321-4AF0A	1
2007 - 2012 Versa (C11)	HOSE-BREATHER	17321-EM30A	1
	TUBE-BREATHER	17338-EM30A	1
2012 - 2016 Versa Sedan (N17)	HOSE VENT	17226-1HK0A	1
	PROTECTOR-FILLER HOSE	17321-3AN0A	1
2014 - 2016 Versa Note (E12)	HOSE VENT	17226-1HK0A	1
	TUBE-VENTILATION HOSE	17321-3VZ1A	1
2005 - 2016 Frontier (D40)	TUBE-VENTILATION	17226-EA000	1
	TUBE-VENTILATION	17226-ZS00A	1
2011 - 2016 Juke (F15)	HOSE-BREATHER	17321-1KM0A	1
	HOSE-BREATHER	17321-1KM1A	1

COVERED PARTS continued

2012 - 2016 NV (F80)	TUBE-VENTILATION	17226-1PA0B	1
2004 – 2006 Altima (L31)	TANK ASSY-FUEL	17202-7Y000	1
	FUEL TANK	17202-8J000	1
	TANK ASSY - FUEL	17202-8J020	1
	TANK ASSY - FUEL	17202-ZD80A	1
2007-2012 Altima (L32)	TANK ASSY - FUEL	17202-JA90A	1
	TANK ASSY-FUEL	17202-ZX00A	1
2007-2013 Altima Coupe (L32)	TANK ASSY-FUEL	17202-JA90A	1
2007-2013 Altima Hybrid (L32)	TANK ASSY - FUEL	17202-JA90A	1
2013 - 2017 Altima Sedan (L33)	TANK ASSY - FUEL	17202-3TA0C	1
	TANK ASSY - FUEL	17202-ZX21C	1
2013 - 2016 NV200/Taxi (M20)	TUBE-VENTILATION	17321-3LM0A	1
2005 - 2015 Xterra (N50)	TUBE-VENTILATION	17226-EA000	1
	TUBE-VENTILATION	17226-ZP00A	1
2009 - 2017 GT-R (R35)	HOSE-FUEL	17224-JF31A	1
2005 - 2012 Pathfinder (R51)	TUBE-VENTILATION	17226-EA000	1
	TUBE-VENTILATION	17226-ZP00A	1
	TUBE-VENTILATION	17226-ZP00B	1
2013 - 2017 Pathfinder and Pathfinder HEV (R52)	TUBE-EVAPOLATION PIPING	17224-3JA0A	1
2008 - 2013 Rogue (S35)	HOSE-BREATHER	17321-JM000	1
2014-2015 Rogue Select (S35)	HOSE-FUEL	17224JF31A	1
2014 - 2016 Rogue (T32)	TUBE-ANTI EVAPORATION CONTROL	14912-4BA0C	1
	TUBE-ANTI EVAPORATION CONTROL	14912-4BA2C	1
	HOSE-BREATHER	17321-4BA0A	1
	HOSE-BREATHER	17321-6FK0A	1
2004 - 2009 Quest (V42)	TANK ASSY - FUEL	17202-ZM00A	1
2011 - 2016 Quest (E52)	TANK ASSY - FUEL	17202-3JW0A	1
2009 - 2014 cube (Z12)	TUBE-VENTILATION	17224-1FC0B	1
2003 - 2009 350Z (Z33)	HOSE-FUEL	17224-EV10A	1
	HOSE-VENTILATION	17226-AC305	1
	HOSE-VENTILATION	17226-CE800	1
2009 - 2017 370Z (Z34)	HOSE-VENTILATION	17224-1EA1A	1
	HOSE-VENTILATION	17226-CE800	1
	HOSE-VENTILATION	17226-EH105	1
2003 - 2007 Murano (Z50)	HOSE-VENTILATION	17226-CC21A	1
2009 - 2016 Murano (Z51, Z52)	HOSE-VENTILATION	17226-1AA0C	1
	HOSE-EVAPORATION PIPING	17226-5AA0C	
	HOSE-EVAPORATION PIPING	17226-5AA0B	

CLAIMS INFORMATION

NOTE:

- The below listed claims information is for the application of emission warranty coverage for this evaporative emission vapor vent line which has been extended to 15 years or 150,000 miles, whichever occurs first, **only in the event that the vent line is found to be completely blocked**. All claims submitted under this emission warranty coverage enhancement will be subject to parts return for verification of the **completely blocked** vent line as the root cause. If the vent line is not **completely blocked**, further diagnostic may be required that is not covered under this bulletin or this enhanced emission warranty coverage.
- Parts claimed under this warranty enhancement will be collected and inspected for blockage. Any repair performed to replace a part that was not **completely blocked** may be charged back to the dealer.

DESCRIPTION	PFP	OP CODE	SYM	DIA	FRT
Inspect EVAP System	(1)	FX55AA	ZE	22	0.4
Install Vent Hose/Line Assembly		FB32AA			(2)

- (1) Reference the electronic parts catalog (FAST or equivalent) and use the part number of the replaced part as the PFP. Only parts listed in the Covered Parts section of this bulletin can be used as the PFP for this emission warranty coverage enhancement.
- (2) Reference the current Nissan Warranty Flat Rate Manual and use the indicated FRT.

Or

DESCRIPTION	PFP	OP CODE	SYM	DIA	FRT
Inspect EVAP System	(1)	FX55AA	ZE	22	0.4
Install Fuel Tank		FB10AA			(2)

- (1) Reference the electronic parts catalog (FAST or equivalent) and use the part number of the replaced part as the PFP. Only parts listed in the Covered Parts section of this bulletin can be used as the PFP for this emission warranty coverage enhancement.
- (2) Reference the current Nissan Warranty Flat Rate Manual and use the indicated FRT.