

## CONSULT III Plus Re/programming and Configuration Login Instruction Guide

Nissan and INFINITI vehicle uses a high level of security when Re/programming or Configuration is performed to the vehicle ECUs. With the release of software version 73.1, technicians will be required to login with their Nissan or Infiniti Techinfo website user ID and password to perform Re/programming and Configuration in CONSULT III Plus.

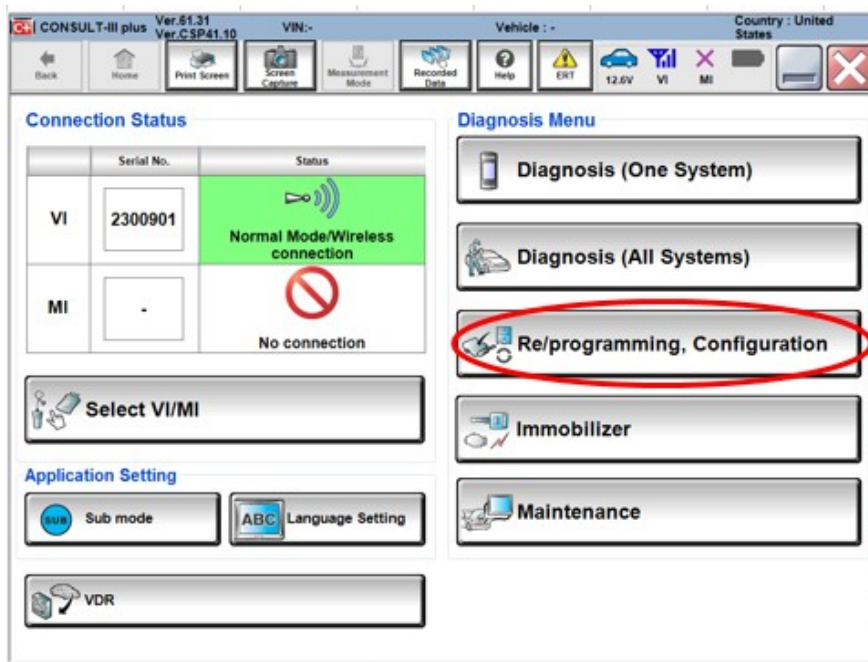
- ❖ **Note: For INFINITI QX30 vehicle, follow the instructions listed on this website.**

### Requirements:

- Registered user on Nissan-techinfo.com or Infiniti-techinfo.com
- Active CONSULT III Plus software Annual Subscription
- CONSULT III Plus PC must be connect to the internet via Wi-Fi or LAN cable.

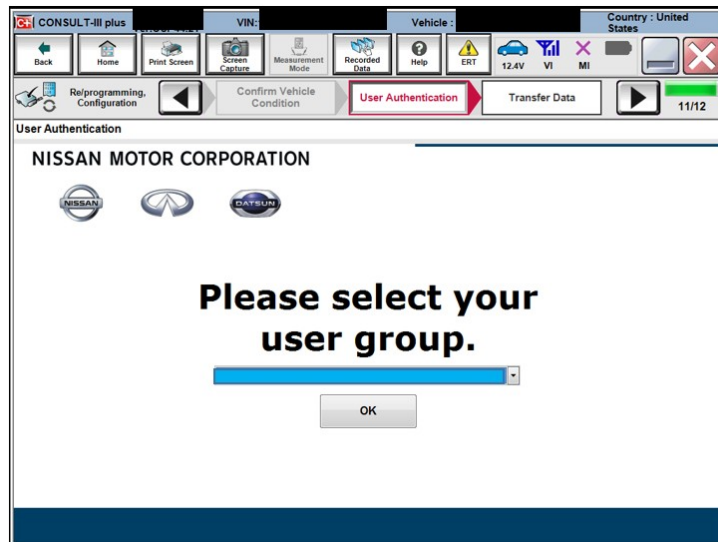
### Instructions:

1. Select Re/programming, Configuration

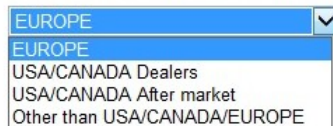


2. Proceed with your normal Re/programming and Configuration steps in CONSULT III Plus. The user authentication step will be displayed just prior to the Re/programming or Configuration data transfer. See screens below. Once your login has been verified, the Re/programming and Configuration will automatically begin.

3. Select USA/CANADA Aftermarket



Please select your user group.



4. Login screen will appear. Enter your Nissan or Infiniti Techinfo website user ID & password.



5. Once your login has been verified, the Re/programming and Configuration will automatically begin.

6. If you experience login error, please email [Cust\\_Assist@tweddle.com](mailto:Cust_Assist@tweddle.com).